



MID-GRIP WIRE ROPE CLIP

SIZES: 3/16 to 3/4 in.

GET IMPROVED RELIABILITY AND LOAD SECUREMENT

The redesigned CM® Mid-Grip Wire Rope Clip features a secured hex bolt and nut design with precise threading for extraordinary strength.

IMPROVED HEX BOLT & NUT DESIGN

TIGHT, SECURE FIT

Hexagon bolt head fits securely into hex-shaped socket for exceptional rotation resistance. This prevents spinning even after repeated use and re-torquing.

PRECISE THREADING

Precise threading on bolt and nut ensures tight alignment and exceptional strength.

FEWER LOOSE PARTS TO DROP

Hex bolt is knurled and machine pressed into socket to securely couple with the saddle.



STANDARD BENEFITS & FEATURES

QUICK INSTALLATION & RETIGHTENING

Allows for full arc wrench swing for quicker installation and disassembly.

STRENGTH & WEARABILITY

Saddles are made of forged steel. Full assembly is mechanical galvanized per ASTM B695-04 Class 25 Type 1.

EASY IDENTIFICATION

Size, manufacturer and trace code are clearly marked on the saddle.

MEETS FEDERAL SPECIFICATIONS

Meets or exceeds performance requirements of FF-C-450 specifications, Type III, Class 1 and will provide maximum holding strength.



HEX IS BETTER THAN ROUND

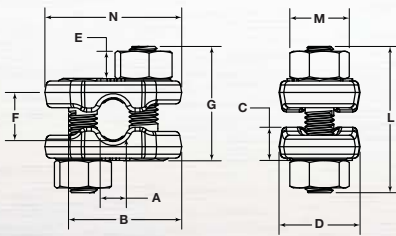
Unlike the CM® Mid-Grip Wire Rope Clip hexagon bolt design, Crosby's Fist Grip uses a spline bolt with a round head that is pressed into a circular socket. Their round design could be prone to slippage and spinning during repeated use and re-tightening.



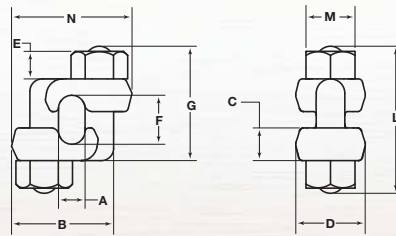
CM® Mid-Grip Wire Rope Clip



Crosby Fist Grip® Clip



NEW STYLE
Available in 3/16" through 5/8"



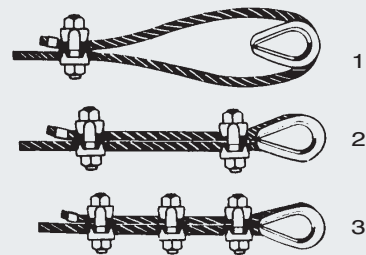
OLD STYLE
Available in 3/4" only

Size (in.)	Standard Package	Product Code	Dimensions (in.)										Minimum Number of Clips	Rope Turn-Back (in.)	Torque (ft./lbs.)	Weight (lbs.)	
			A	B	C	D	E Thread	F	G	L Approx.	M	N					
New Style																	
3/16	20	M2546	0.37	1.53	0.44	1.06	3/8 - 16	0.50	1.50	1.93	0.69	1.74	2	4	30	0.38	
1/4	20	M2546	0.37	1.53	0.44	1.06	3/8 - 16	0.50	1.50	1.93	0.69	1.74	2	4	30	0.38	
5/16	20	M2547	0.34	1.48	0.44	1.06	3/8 - 16	0.63	1.50	1.90	0.69	1.80	2	5	30	0.38	
3/8	20	M2548	0.46	1.67	0.54	1.13	7/16 - 14	0.75	1.84	2.26	0.75	2.00	2	5.5	45	0.49	
7/16	20	M2550	0.65	2.03	0.59	1.31	1/2 - 13	1.05	2.23	2.74	0.88	2.40	2	6.5	65	0.84	
1/2	20	M2550	0.65	2.03	0.59	1.31	1/2 - 13	1.05	2.23	2.74	0.88	2.40	3	11	65	0.84	
9/16	20	M2551	0.78	2.46	0.73	1.63	5/8 - 11	1.38	2.81	3.44	1.06	2.90	3	12.75	130	1.55	
5/8	20	M2551	0.78	2.46	0.73	1.63	5/8 - 11	1.38	2.81	3.44	1.06	2.90	3	13.5	130	1.55	
Old Style																	
3/4	20	M2252	0.81	2.69	0.88	1.81	3/4 - 10	1.50	3.38	5.00	1.25	3.02	3	16	225	1.79	

INSPECTION, CARE & USE

PROPER USE OF MID-GRIP CLIPS

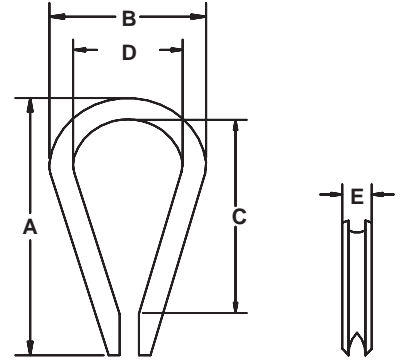
- Refer to chart above when following these instructions. Turn back specified amounts of rope from thimble or loop. Apply first clip one base width from dead end of rope. Tighten nuts evenly, alternating from one nut to the other until reaching the recommended torque.
- When two clips are required, apply the second clip as near the loop or thimble as possible. Tighten nuts evenly, alternating until reaching the recommended torque. When more than two clips are required, apply the second clip as near the loop or thimble as possible and turn nuts on second clip firmly, but do not tighten. Proceed to step 3.
- When three or more clips are required, space additional clips between first two and take up rope slack. Then tighten nuts on all clips, alternating from one nut to the other until reaching the recommended torque.
- Apply an initial load equal to loads expected in use. Inspect for proper spacing and retighten the nuts to the recommended torque.



Phone (800) 888.0985 • (716) 689.5400 • Fax: (716) 689.5644 • www.cmworks.com

Wire Rope Attachments

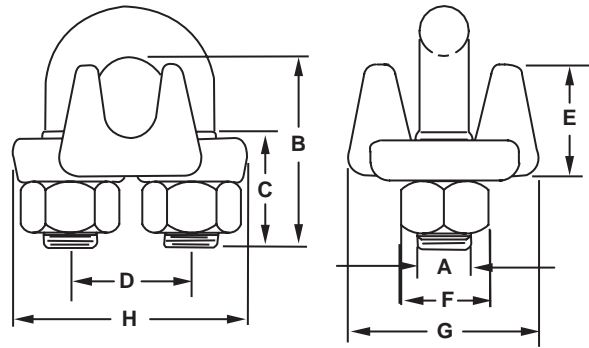
Thimbles



Rope Diameter	Product Code	Standard Pack	Dimensions					Weight
			A	B	C	D	E	
Imperial								
in.			in.	in.	in.	in.	in.	lb.
Malleable Wire Rope Thimbles (Zinc Plated)								
1/8	86095	100	1.94	1.06	1.31	0.69	0.25	0.035
3/16	86195	100	1.94	1.06	1.31	0.69	0.31	0.035
1/4	86295	100	1.94	1.06	1.31	0.69	0.38	0.035
5/16	86395	100	2.13	1.25	1.5	0.81	0.44	0.040
3/8	86495	50	2.38	1.47	1.63	0.94	0.53	0.070
1/2	86695	50	2.75	1.75	1.88	1.13	0.69	0.125
5/8	86895	25	3.50	2.38	2.25	1.38	0.91	0.345
Heavy Duty Wire Rope Thimbles (Hot Galvanized)								
1/4	87296	25	2.19	1.50	1.63	0.88	0.41	0.075
5/16	87396	25	2.50	1.81	1.88	1.06	0.5	0.140
3/8	87496	25	2.88	2.13	2.13	1.13	0.66	0.250
1/2	87696	25	3.63	2.56	2.75	1.50	0.84	0.510
5/8	87896	10	4.25	3.00	3.25	1.75	1.00	0.750
3/4	87906	10	5.00	3.50	3.75	2.00	1.25	1.470
7/8	87916	10	5.50	4.00	4.25	2.25	1.38	1.850

Wire Rope Attachments

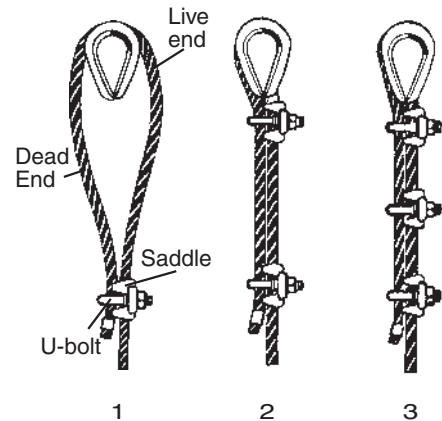
Wire Rope Clips



Size	Product Code	Dimensions								Min No Clips	Torque	Rope Turnbuckle	Weight
		A	B	C	D	E	F	G	H				
Imperial													
in.		in.	in.	in.	in.	in.	in.	in.	in.		ft./lb.	in.	lb.
1/8*	M244	1/8-24UNC	23/32	7/16	15/32	13/32	3/8	13/16	15/16	2	4-1/2	3-1/4	5
3/16*	M245	1/4-20UNC	31/32	9/16	19/32	1/2	1/2	15/16	1-5/32	2	7-1/2	3-3/4	9
1/4	M246	5/16-18UNC	1-1/32	1/2	3/4	31/32	9/16	1-3/16	1-7/16	2	15	4-3/4	18
5/16	M247	3/8-16UNC	1-3/8	3/4	7/8	23/32	11/16	1-5/16	1-11/16	2	30	5-1/4	30
3/8	M248	7/16-14UNC	1-1/2	3/4	1	29/32	3/4	1-5/8	1-15/16	2	45	6-1/2	42
7/16	M249	1/2-13UNC	1-7/8	1	1-3/16	1-1/16	7/8	1-25/32	2-5/16	2	65	7	70
1/2	M250	1/2-13UNC	1-7/8	1	1-3/16	1-1/8	7/8	1-29/32	2-5/16	3	65	11-1/2	75
9/16	M296	9/16-12UNC	2-3/8	1-1/4	1-5/16	1-1/4	15/16	1-31/32	2-1/2	3	95	12	100
5/8	M251	9/16-12UNC	2-3/8	1-1/4	1-5/16	1-11/32	15/16	2	2-1/2	3	95	12	100
3/4	M252	5/8-11UNC	2-3/4	1-7/16	1-1/2	1-7/16	1-1/16	2-11/32	2-13/16	4	130	18	150
7/8	M253	3/4-10UNC	3-1/8	1-5/8	1-3/4	1-19/32	1-1/4	2-7/16	3-5/32	4	225	20	240
1	M254	3/4-10UNC	3-1/2	1-13/16	1-7/8	1-25/32	1-1/4	2-5/8	3-5/32	5	225	26	250
1-1/8	M255	3/4-10UNC	3-7/8	2	2	1-25/32	1-1/4	2-13/16	3-19/32	6	225	34	310
1-1/4	M256	7/8-9UNC	4-1/4	2-1/8	2-5/16	2-3/16	1-7/16	3-1/8	4-1/8	7	360	37	460
1-3/8	M257	7/8-9UNC	4-5/8	2-5/16	2-3/8	2-1/4	1-7/16	3-1/8	4-1/4	7	360	44	520
1-1/2	M258	7/8-9UNC	4-15/16	2-3/8	2-19/32	2-1/2	1-7/16	3-1/8	4-7/16	8	360	48	590

Proper use of Wire Rope Clips

1. Refer to the chart above in following these instructions. Turn back specified amount of rope from thimble or loop. Apply first clip one base width from dead end of rope. Apply U-bolt over dead end of wire rope - live end rests in saddle. Tighten nuts evenly, alternate from one nut to the other until reaching the recommended torque.
2. When two clips are required, apply the second clip as near the thimble or loop as possible. Tighten nuts evenly, alternating until reaching the recommended torque. When more than two clips are required, apply the second clip as near the loop or thimble as possible, turn nuts on second clip firmly, but do not tighten. Proceed to Step 3.
3. When three or more clips are required, space additional clips equally between the first two - take up rope slack - tighten nuts on each U-bolt evenly, alternating from one nut to the other until reaching the recommended torque.
4. Apply an initial load equal to loads expected in use. Inspect for proper orientation and spacing of clips and retighten the nuts to recommended torque.



▲ WARNING ▲

Improper installation and use of wire rope clips can result in injury.

To avoid injury:

Install and use only as instructed herein.